

KOMORI CORPORATION

11-1, Azumabashi 3-chome, Sumida-ku, Tokyo 130-8666, Japan Tel: +81-3-5608-7817-19 Fax: +81-3-3624-6955

<http://www.komori.com>



JQA - QMA10134
JQA - EM1949
Tsukuba Plant



SYSTEM 38S

System 38S: The Strategic Machine for Operating Innovation

For web offset users, in the current rapidly changing environment amid diversifying needs, the development of a machine with enhanced short-run performance is critically important. The industry requires a next-generation machine that meets a whole host of requirements - consistent quality at maximum operating speed, exceptional productivity, improved cost-performance, and environmentally responsive performance.

To address this situation, Komori has concentrated its full range of technological resources to develop the System 38S — the new world-standard 16-page web offset press.

The System 38S affords the superb quality of a single-diameter design, a full job changeover time of less than 7 minutes, and 50,000/60,000iph maximum printing speed.

Komori's Full-APC changes eight plates in less than two minutes. Plus, the System 38S is equipped with the highly evolved KHS-AI system, a sophisticated operation system. In addition to one-step register adjustment, color matching and fold adjustment, KHS-AI self-learns user data, allowing it to function as a total control system. Available with a wide lineup of folders for maximum value-added performance.

The ultimate weapon for any web printing business: System 38S.

CONCEPT

KOMORI

KOMORI

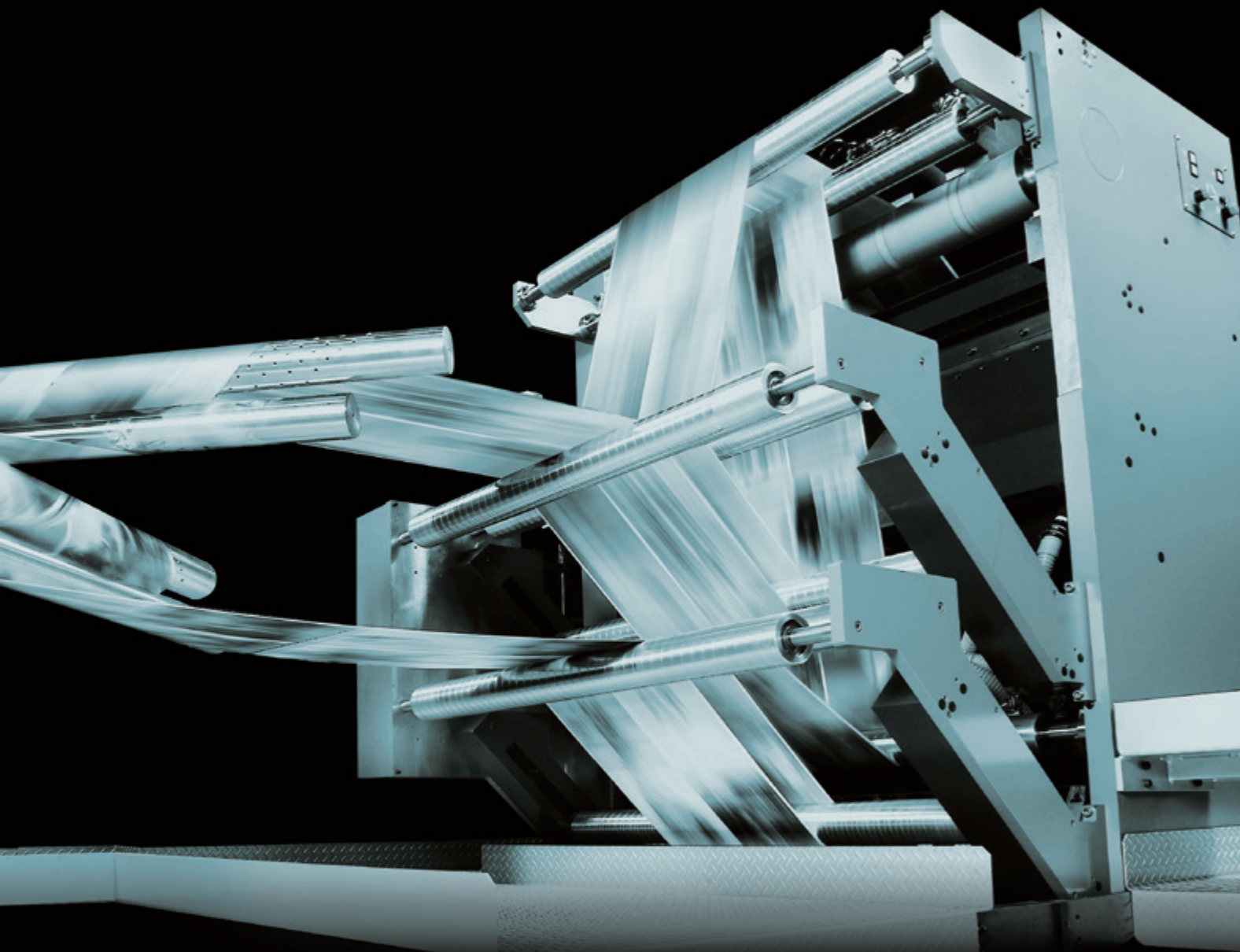
Loaded with functions that contribute to environmental preservation.

Komori believes that developing presses that benefit operators and the environment is one of our most vital missions. Komori's manufacturing plant at Tsukuba is fully ISO 14001 and 9001 certified, and environmental preservation has been carefully factored into the design of the System 38S.

Reduced paper wastage and lower consumption of ink and solvents thanks to many automation features, such as KHS-AI. Easy nonalcohol printing with Komorimatic. Lower energy consumption due to the use of highefficiency motors.

ECOLOGY





PROFITABILITY

■ The fruition of KHS-inspired thinking. Radically improved profitability.

The core of Komori's thinking is a strategic theme —

'Eliminate all waste in work, time and paper, standardize everywhere, and create new value.'

Komori has mobilized all of its technologies pervasively to resolve these issues in developing the System 38S.

Rapid job changeover due to the exclusive 'single digit' makeready,

KHS-driven one-step register adjustment, color matching and fold adjustment.

Plus, 50,000/60,000iph maximum printing speed.



▲ Double Width Folder

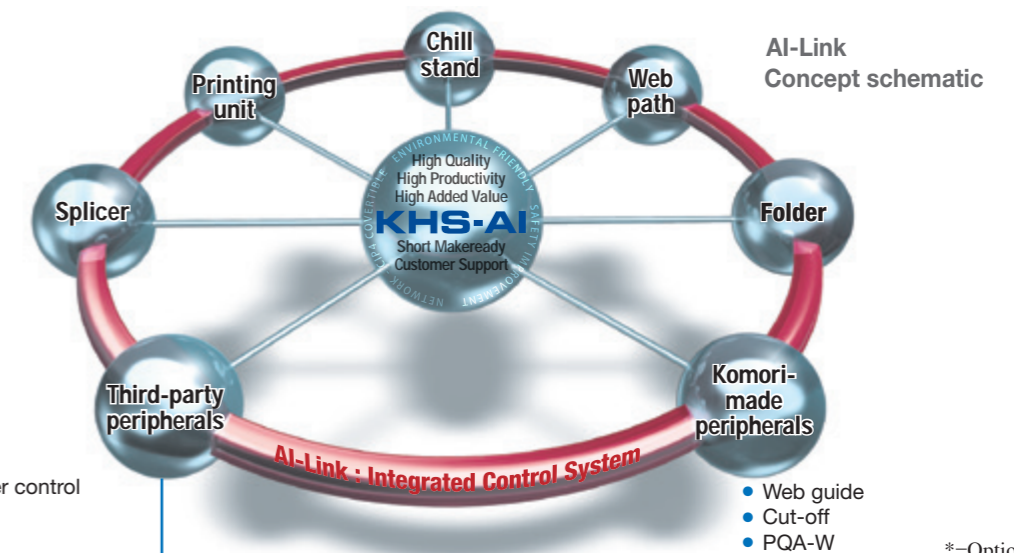
Newly developed double width folder allows individual control of fold on operator side (former side)-drive side (turn bar side). This significantly improves drive side (turn bar side) folding precision.

■ Web Offset KHS-AI + AI-Link* for Integrated Presetting of Peripherals

- Automatic control of fine adjustments at print startup in addition to KHS-AI preset functions
- Integrated control of peripheral devices in addition to control of all units from the splicer to the folder



Control synergies offer unprecedented reduction of paper waste and extremely short makereadies.



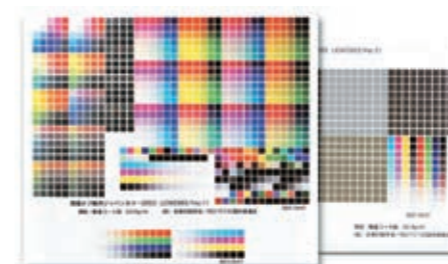
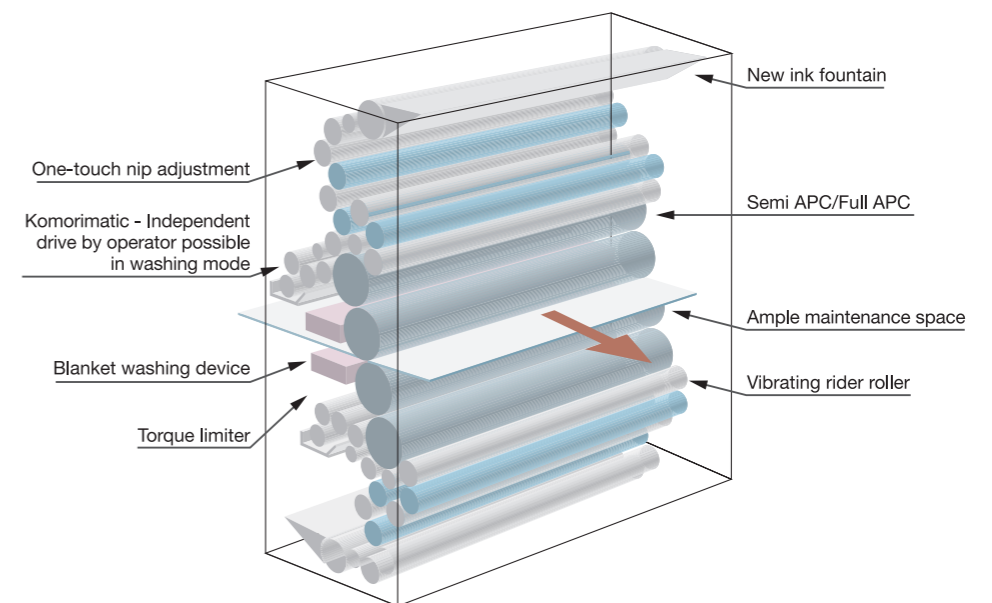
*=Option



Q U A L I T Y

■ Extraordinary Print Quality

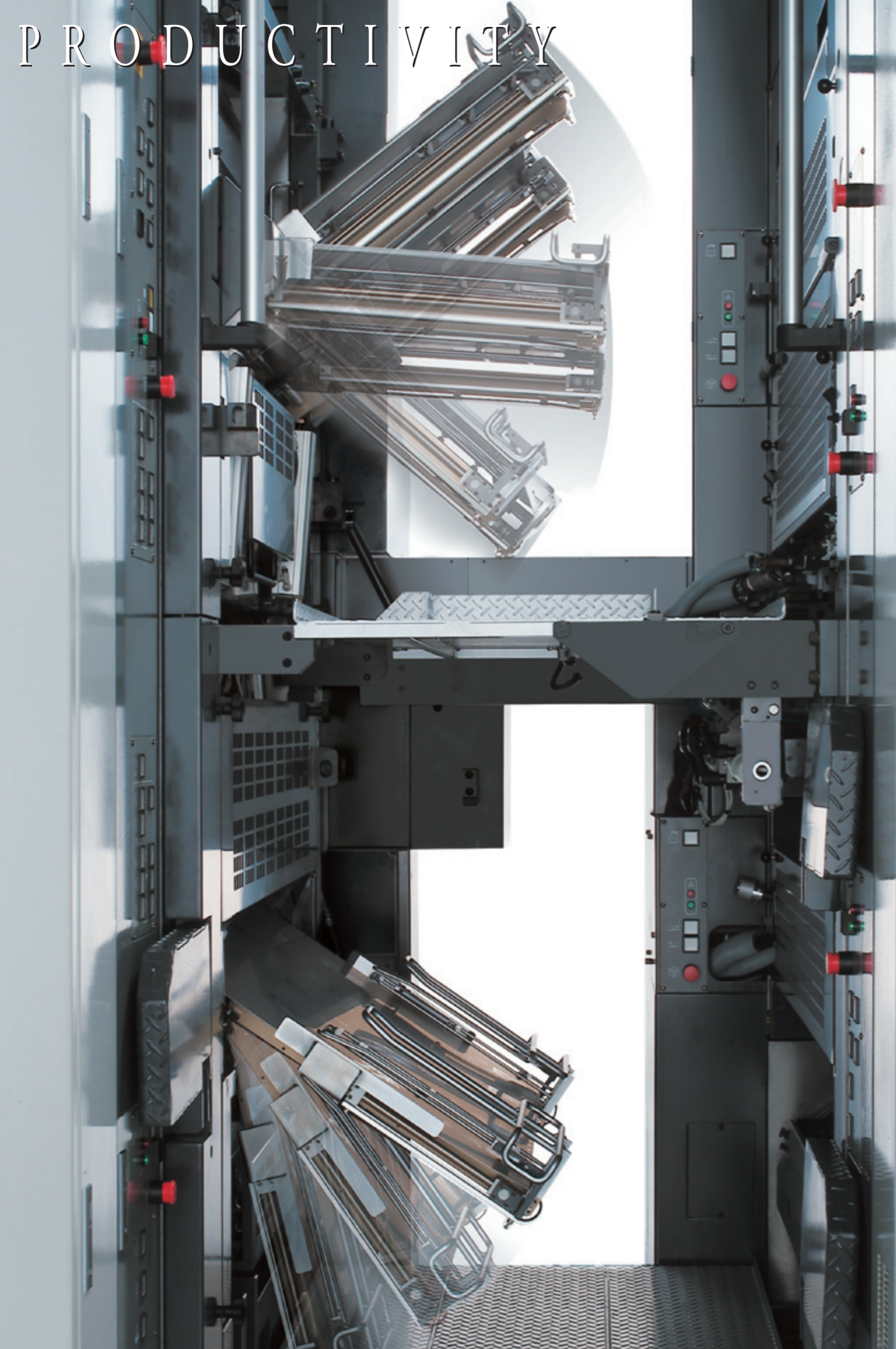
Komori's combined technologies ensure brilliant reproducibility to accommodate any client print quality requirement with ease. The printing units incorporate Komori's KHS-AI thinking throughout, affording ample maintenance space and a full margin of head clearance between the lower units for outstanding ease of operation. The optimum balance of fully distributed ink and the minimum amount of water, ensuring superb dot reproduction. Engineered to resist shock marks at maximum printing speed.



■ Proven Reference Quality

The benchmark chart of Japan Color - 2003 (JCW 2003/Version 1) for commercial web offset by the Domestic Committee of ISO/TC 130 of the Japan Federation of Printing Industries is printed on a Komori web press.

PRODUCTIVITY



PRODUCTIVITY

■ Komori breakthrough technologies give a powerful boost to productivity

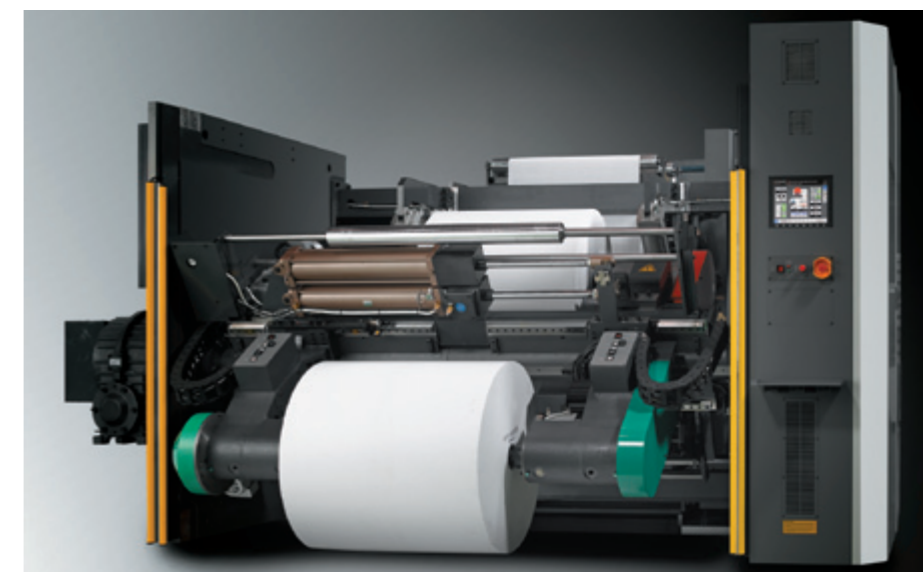
The System 38S is capable of a full job changeover in less than seven minutes.

Komori upgraded the automation systems and implemented parallel control of simultaneous changeover processes to enable this exceptional short-makeready performance.

Full-APC, moreover, automatically changes all eight plates in less than two minutes.



■ The System 38S develops profitability through its small installation footprint and manpower-saving performance



▲ Two-arm flying paster with integrated infeed

The split-arm accommodates simultaneous loading for full-size web reels. Development of the System 38S focused relentlessly on enhancing profitability, as shown in the tail control that accommodates the pasted and cut positions in one signature for easy splicing and to prevent paper jams in the folder.



SYSTEM 38S **CF combination folder**
SIGNATURES Maximum production speed 42,000 / 50,000 / 60,000 IPH



SYSTEM 38S **CFT double width combination folder**
SIGNATURES Maximum production speed 42,000 / 50,000 IPH

	⇒ First fold	⇒ Double parallel fold	⇒ Delta fold	⇒ Chopper fold	⇒ Chopper fold	⇒ Chopper fold
Full Web	A3x8p	A5x2x16p	12p	A4x16p	A5x32p	24p
Slit 1/3 Ribbons Shift	12p	24p	18p	24p		
Slit 1/2 Ribbons Shift	A4x16p	A5x32p	24p	32p		

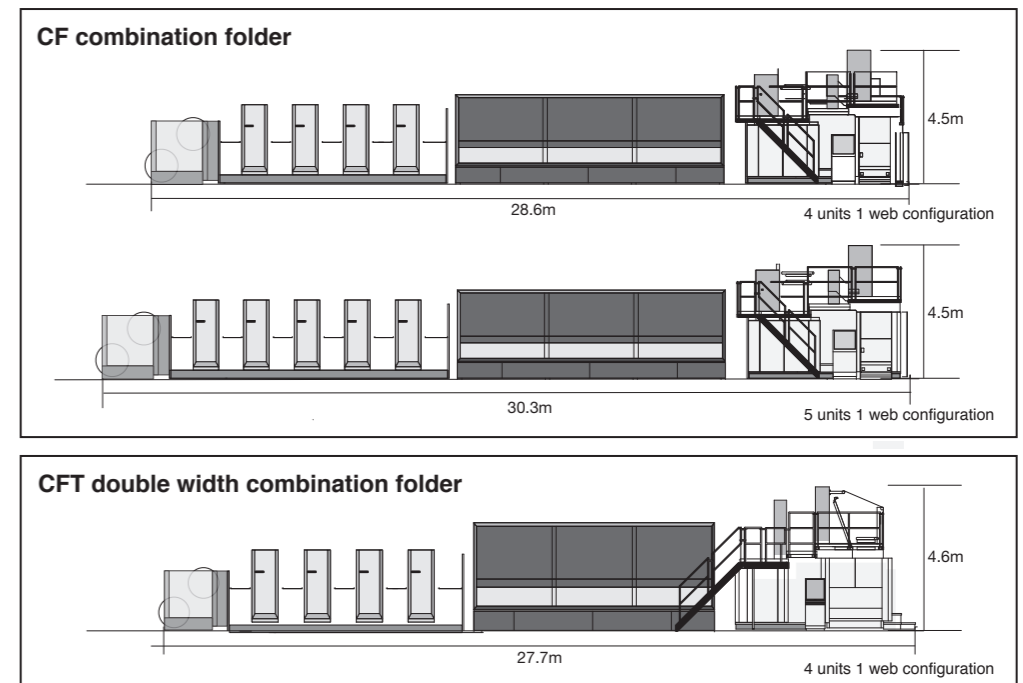
Including options.

Slit 1/2			A4x8px2		
Additional CMF Folder (option)					
Half cut	Slit 1/2 Ribbons Shift	A4x8px2	Slit 1/2	A4x4px4	
Additional Half Cut (option)					

	⇒ First fold	⇒ Chopper fold
Full Web	A3x8p	A4x16p
Slit 1/2	A3x4p x2	A4x8p x2

Including options.

OUTLINE





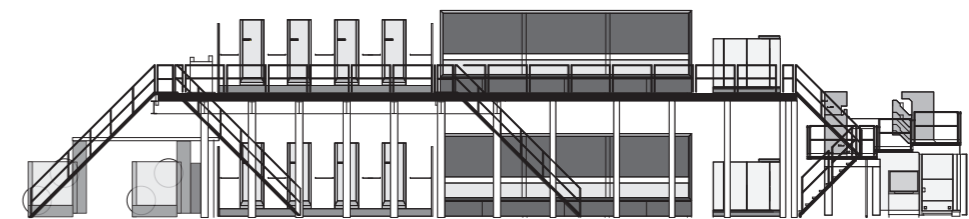
SYSTEM 38 S DC double chopper combination folder
SIGNATURES Maximum production speed 60,000 IPH Available on 625mm cutoff model

SPECIFICATIONS

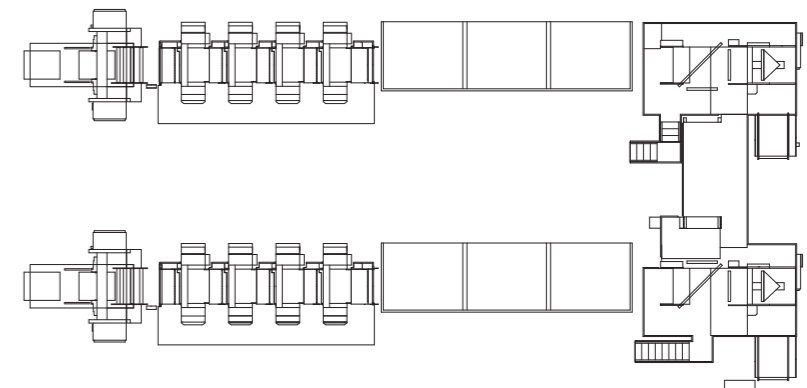
General Specifications	
Maximum printing speed	42,000 / 50,000 / 60,000* IPH
Cutoff	578 / 598 / 625 mm
Maximum web width	965mm
Non printing gap	8mm (theoretical - 1 color with unit phasing)
Paper stock range	40~130g/m ²

*Available on 625mm cutoff model only

VARIATIONS



8 units stacked 2 webs configuration

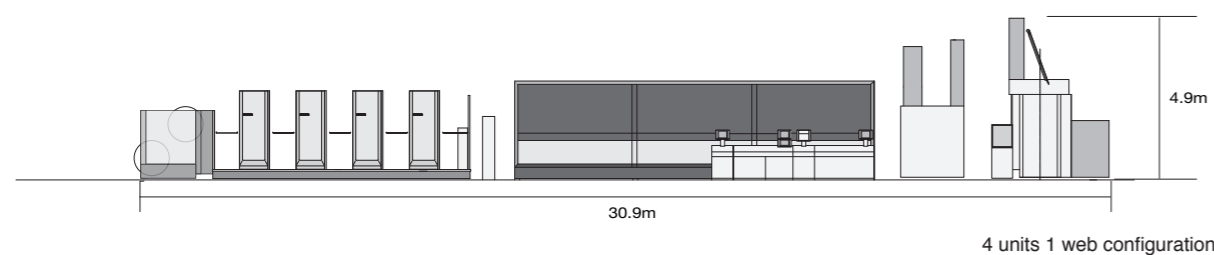


8 units duplex 2 webs configuration

	⇒ First fold	⇒ Double parallel fold	⇒ Delta fold	⇒⊥ Chopper fold	⇒⊥
FULL WEB	A3x8p	A5x2x16p	12p	A4x16p	24p
Slit 1/3 Ribbons Shift	12p	24p		24p	
Slit 1/2 Ribbons Shift	A4x16p	A5x32p		32p	

Including options.

OUTLINE



4 units 1 web configuration

Note:
 Copyright © 2016 Komori Corporation. All rights reserved. All specifications stated herein are current as of March, 2016. Maximum printing speed may differ from specification herein. Komori reserves the right to change specifications on machines without notice and without obligation to modify equipment previously manufactured. Because of changes in design, specification, or optional attachments and accessories, the machine actually delivered may differ in appearance and performance from that shown in this brochure.

The trademarks and logos of Komori Corporation or others used on this brochure are the property of Komori Corporation or their respective owners. You may not use, and nothing contained on this brochure grants by implication, waiver, estoppel or otherwise, any right to use any trademark displayed on the brochure without the written permission of Komori Corporation or the respective owner.