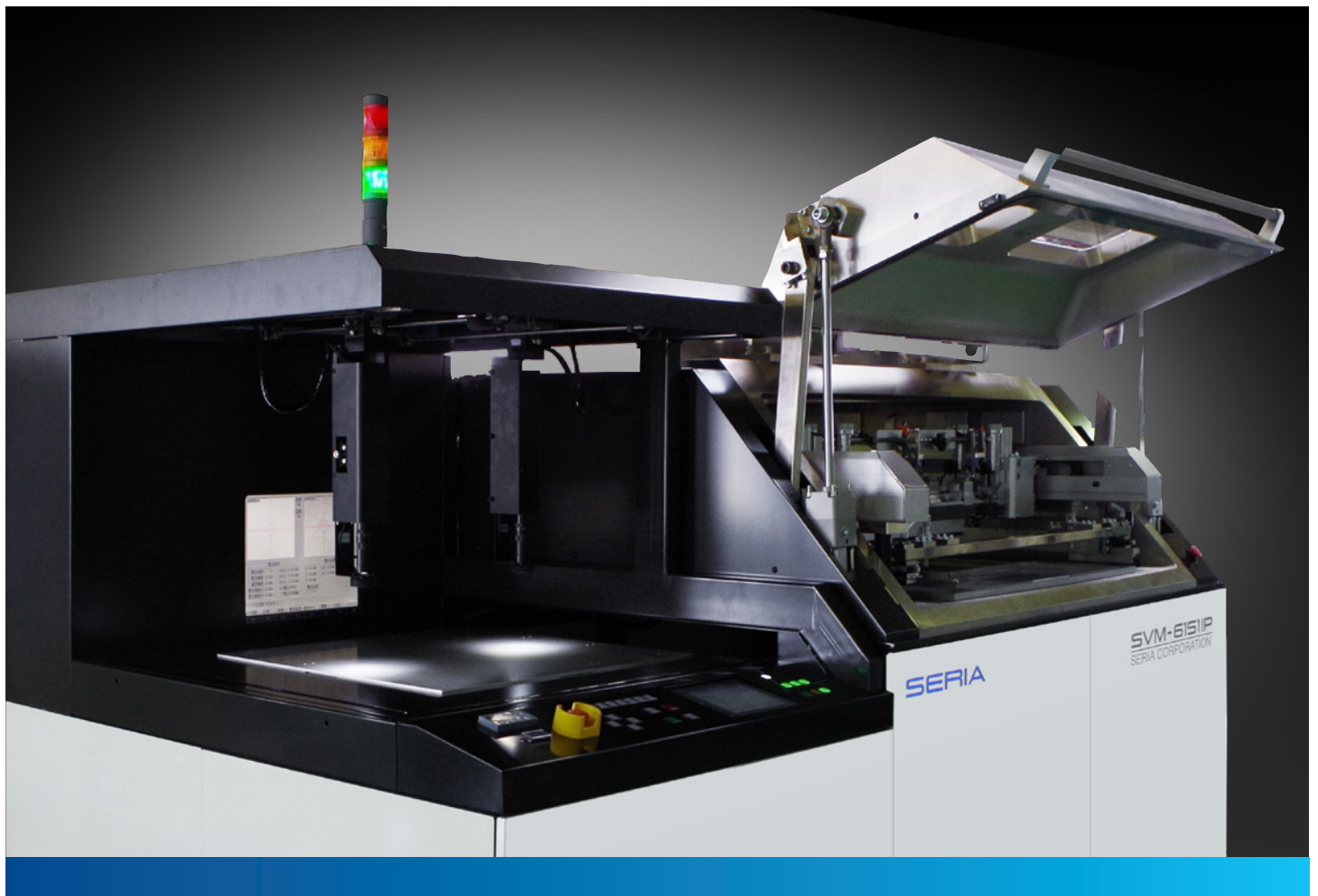


SVM-6151P



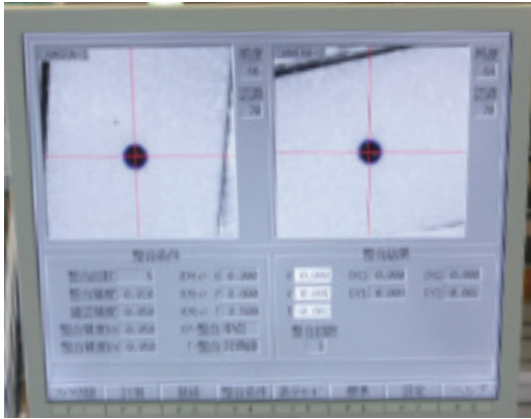
Equipped with **auto alignment system**



Speed up enabled by design optimization



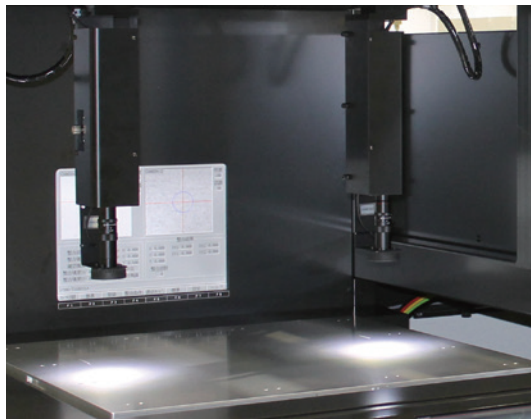
Equipped with **multi function** for several kind of printing

Standard Equipment**Image Processing**

SERIA Original Image Processing Function

**Off-Contact Function**

Equipped with off-contact function as standard

**Printing Table**

Equipped with work clamp

Basic Specifications

		SVM-6151IP	
Max.Work Size (W×D)	(W)610×(D)510 mm	Machine Dimensions (W×D×H)	(W)2960×(D)2060×(H)2100 mm (Excluded Vacuum Pump)
Work Thickness	t 0.4 ~ 5.0 mm	Machine Weight	Approx.3500kg
Frame Size (W×D)	(W)1000×(D)1100 mm t 25 ~ 30 mm	Power Supply	For Main Unit : AC200V 3phase 50/60Hz 3.9kW For Vacuum Pump : AC200V 3phase 50/60Hz 21.4kW
SQ.Length	Max.650 mm	Air Supply	For Driving : 100ℓ/min 0.5MPa For Purging : 100ℓ/min 0.5MPa
SQ. / SC. Pressure	100 ~ 1000N(Parameter Setting)	Cooling Water	For Vacuum Pump : 4ℓ/min or more *Various Standards
SQ. Speed	10.0 ~ 300.0 mm /s(Parameter Setting)		
SQ. Stroke	750 mm		
Print Table Size (W×D)	(W)730×(D)730 mm		
CCD Camera	2Camera		
Vacuum Pressure Level	100 ~ 10000Pa Parameter Setting		

